

BRAZILIAN SOCIAL ASSISTANCE POLICY

Central Social Assistance System- SUAS

Central Social Assistance Policy

Characteristics:

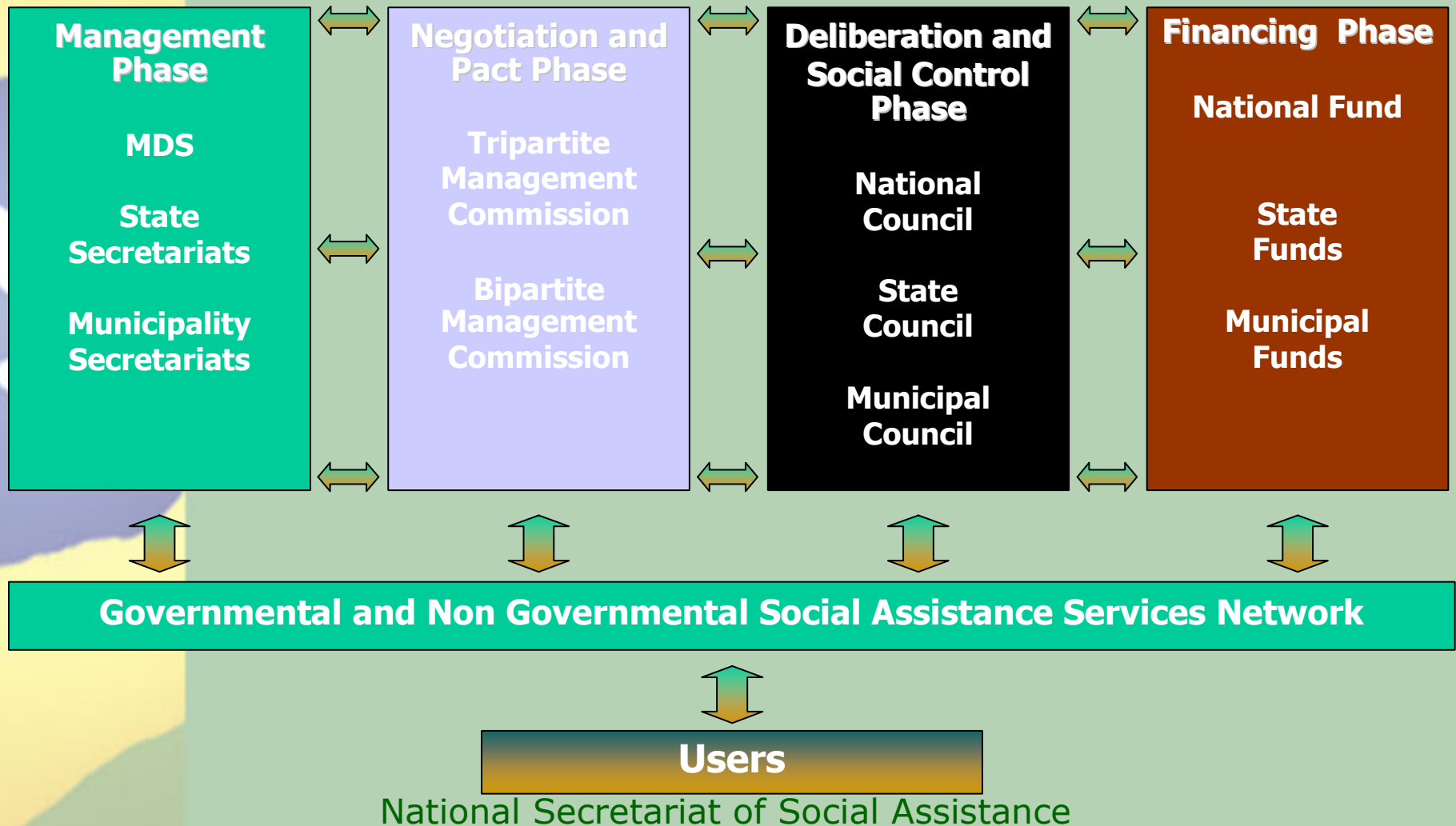
- Constitutionally defined as (**Federal Constitution/1988**):
 - Public policy: citizen rights and State responsibility;
 - Part of Social Security together with health and social welfare;
 - It is a decentralized and participative system.

Organic Law of Social Assistance – LOAS /1997

General Characteristics:

- Defines the policy and its goals;
- Establishes its principles and guidelines:
universalization and equal access, decentralization and participation;
 - It is the organization and management of social assistance. It presents elements of a decentralized and participatory system of social assistance: Counsels, Plans, Funds and Social Assistance Conferences.

Decentralized and Participative System of Social Assistance



Central Social Assistance System

- ❖ The main resolution of the National Conference on Social Assistance – **Dec/2003**;
- ❖ It was defined with the establishment of the National Policy on Social Assistance - **PNAS**
- ❖ The establishment of SUAS was meant to overcome the following problems during the policy implementation:
 - **Insufficient regulation** at governmental and non governmental area and lack of concept clarity;

Central Social Assistance System

- Structure of **services without a proper integration within the System**, without definition of references and counter-references, flows and procedures of social intervention and reception generating superposition and/or parallel actions;
- **Segmentation**, superposition and/or parallelism of **activities**;
- **Focus on the contractual relation** between managers implying on bureaucracy, delay on sending resources, lack of managerial autonomy for municipalities and states;

Central Social Assistance System

- **Lack of definition of responsibilities/competencies** in the three levels of government with respect to policy management and financing;
- **Development of actions without a qualified data base**, jeopardizing the diagnosis of problems and social potentialities, as well as monitoring and evaluation;
- **Insufficient inter-sectorial action** between social policies;
- Absence of ongoing processes of **training and human resources policy.**

Central Social Assistance System

- ❖ **Characterization:**
- ❖ **A new management model:**
 - ❖ Assumes a **federal pact** with the definition of competencies of the three levels of government;
 - ❖ **A new logic of organization of actions:** by level of complexity, by territory, considering regions and size of municipalities;
 - ❖ **Forms of operacionalization of LOAS** that enables a participatory and decentralized system and the regulation in the country.

Central Social Assistance System

- ❖ **Characterization (cont.):**
- ❖ Forum for discussion and provider of actions at different levels of complexity:
 - ❖ Basic Social Protection and
 - ❖ Special Social Protection
- ❖ Regulation of hierarchy, of links and responsibilities within the system, of services, benefits and e social assistance actions.
- ❖ Change of the past programmatic lack of integration among different levels of government and of actions for social categories and segments.

Guidelines of SUAS

- ❖ **Political and Administrative Decentralization** to the States, the Federal District and Municipalities and central command of action in each government level;
- ❖ **Public Participation** through representative institutions in policy formulation and control of action at all levels;
- ❖ **Pre-eminence of the responsibility of the Federal Government** with respect to conducting social assistance policy at all government levels;
- ❖ **Focus on the family** in the creation and implementation of benefits, services, programmes and projects.

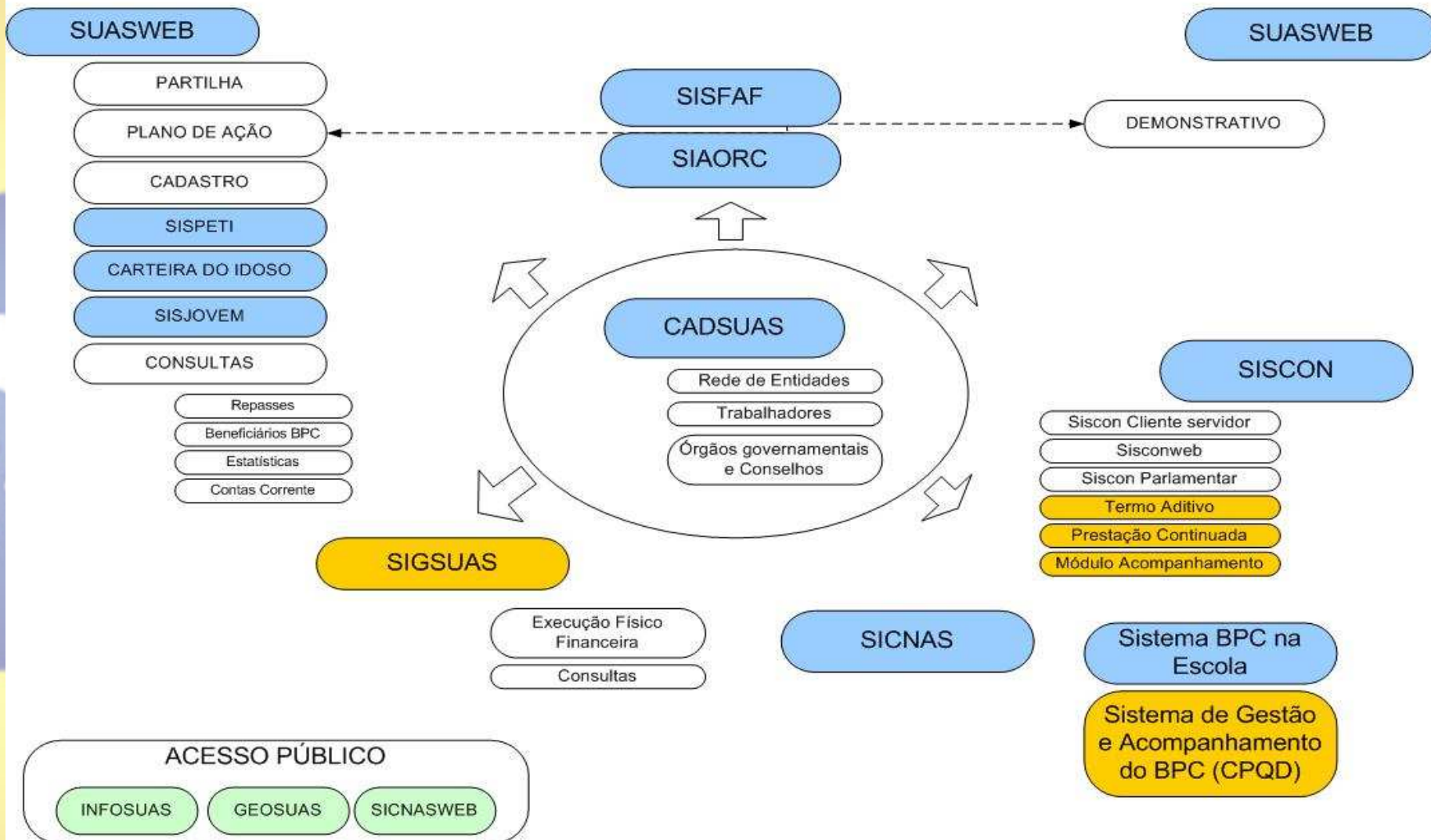
Concepts and Bases for SUAS organization

- ❖ Social and Family Matrix
- ❖ Political and Administrative Decentralization and Territorial focus
- ❖ New grounds between the State and Civil Society
- ❖ Financing by the three spheres of government with division of responsibilities
- ❖ Social Control
- ❖ Human Resources Policy
- ❖ Information, Monitoring and Evaluation

BASIC OPERATIONAL RULE – NOB 2005

- ❖ Guides and sets the rules for operational management National Policy for Social Assistance - PNAS:
 - ❖ Management Tools
 - ❖ Social Assistance Plan;
 - ❖ Social Assistance Budget;
 - ❖ Information Management, Monitoring and Evaluation;
 - ❖ Management Report.
 - ❖ Fora for discussion, consensus building and decision making
 - ❖ Financing
 - ❖ Transfer Mechanisms;
 - ❖ Division Criteria;
 - ❖ Transfer Criteria.

Sistemas de Informação do SUAS



Systems and subsystems under development

Bases with public access

Systems and subsystems in operation

Social Assistance Protection in SUAS

Basic and Special Social Protection

- Collection of services, benefits, projects and programmes offered through public institutions of SUAS: CRAS and CREAS or authorized private networks;
- Aims at guaranteeing social security to prevent, to protect, to overcome vulnerability and risk situations and at promoting and defending human rights
- Actions developed seek to articulate cash transfers with social assistance services in order to offer more opportunities for individual, family and community development.

Basic Social Protection

Objective: prevent risk situations

- ❖ Development of potentials and acquisitions;
- ❖ Strength family and community ties.

Target: families and individuals who lives under **social vulnerability conditions**

- ❖ poverty;
- ❖ deprivation (lack of cash, precarious or lack of access to public services among others);
- ❖ Weakness of affective and family ties and social belonging (age, ethnic, gender and disability discrimination, among others).

Basic Social Protection

Services and Benefits

- Programme of Integral Attention to Families (PAIF) – Social and family monitoring services;
- Projovem Adolescente – social and educational services;
- Services of intergenerational relations and for children ages 0 to 6, elderly and people with special needs;
- eventual benefits;
- Benefits of Continuous Support – BPC;
- Other actions and projects of access to income

Basic Social Protection

Social Assistance Reference Centers – CRAS

- It is a public state entity located in areas with high indices of vulnerability and social risk, aiming at offering social and assistance to families;
- It is part of the Central Social Assistance System - SUAS;
- It is a place that offers families, in the majority of cases, the first access to their rights for social assistance and, therefore, social protection;
- It is structured as a unified port of entry for the users of social assistance policy to the basic protection network and a reference for sending to Special Protection.

Basic Social Protection

Benefit of Continuous Support – BPC

Legal Basis

- Established by the 1988 Federal Constitution;
- Regulated by Law 8.742/93 – Organic Law of Social Assistance and Decree 6.214, of 26.10.2007

Concept:

- Constitutional Right;
- Non Contributive Provision of the Social Assistance Policy;
- Individual Right; Inalienable; not lifelong;
- Regular and stable income.

Basic Social Protection

Benefit of Continuous Support – BPC

Eligibility Criteria

Elderly Person: 65 years of age or more.

Person with Special Needs: a person who is unable to live independently or to work” (Art. 20 §2 - LOAS)

Family unable to sustain a person with special needs or elderly person: a family whose per capita monthly income is lower than a $\frac{1}{4}$ of the minimum wage.

Basic Social Protection

Benefit of Continuous Support – BPC

Active Benefits

	PwSN*	Elderly	TOTAL	
2006		1.293.645	1.183.840	2.477.485
2007		1.385.107	1.295.716	2.680.823
Jun2008		1.447.433	1.352.226	2.799.659

* People with Special Needs

Social Basic Protection

Benefit of Continuous Support – BPC

Resources Invested by BPC by Category Brazil (2006 and 2007)

PwSN*		Elderly	Total
2006 – R\$	5,1billion	4,6 billion	9,7 billion
Euro billion			3,4
2007- R\$	5,9 billion	5,5 billion	11,5 billion
Euro billion			4,4

Rate of investment of BPC as part of GNP in 2007 : 0,44%

* People with Special Needs

Basic Social Protection

Benefit of Continuous Support – BPC

Impact of BPC on poverty and social inequality reduction

- Effectively helps to reduce poverty when it transfers income;
- Represents 0,3 % of total income of municipalities and has a significant progressively role. Without it there would be a 36% increase of poor families and 17% increase of extremely poor families.

Source: Research “Cash Transfer programmes in Brazil: impacts on inequality” (IPEA, 2006)

Basic Social Protection

Benefit of Continuous Support – BPC

Difficulties

- Proof of family income given the large amount of informal income and the lack of communication between existing data base;
- Involvement of intermediaries;
- Insufficient geographical cover of the operating agency;
- Inadequate cover of benefits in rural areas;
- Perception of BPC as a pension benefit;
- Controversy with regard to the long term political and financial sustainability of the amount of the benefit.

Basic Social Protection

Benefit of Continuous Support – BPC

Agenda

- Increased harmonization with education, health and labour;
- Revision of the family composition concept;
- Implementation of a new model of Deficiency Evaluation and Degree of Disability based on the International Classification of Functioning, Disability and Health (ICF);
- Technological infrastructure investment;
- Operational links between data bases and sectoral policy systems;
- Annual Research on Impact Evaluation of BPC monitoring a control group of beneficiaries.

Special Social Protection

Objective: protect, from risk situations, families and individuals whose rights have been violated and/or whose family or community ties have been broken.

- ❖ **Medium Complexity:** violated rights but with family and community ties intact;
- ❖ **High Complexity:** without reference and/or under threat and in need of being removed from his/her family and/or community.

Target Group: people living under conditions of personal and social risk.

- ❖ Resulting from abandonment, physical and/or psychological abuse, sexual abuse, use of psychoactive substances, social and educational restraining orders, living on the street, child labor, among others.

Special Social Protection

Special Social Protection Services:

- Protection services of children and adolescents who are victims of violence or sexual abuse and their families;
- Child Labour Eradication Programme – PETI
- Information, Counselling, Support and Social Inclusion Services to ensure rights of individual and families whose rights have been violated;
- Shelter services for children, elderly, people with special needs, people living on the street;
- Attention services for adolescents and youth under part-time regime of social and educational restraining orders;

Special Social Protection

Specialized Reference Centers of Social Assistance – CREAS

- Public units for specialized services at municipal or regional level;
- Provides protection services for individuals and families who are victims of violence, abuse, and other forms of rights violation;
- Promote connection of its services and other special protection services with other social policies as part of an integral protection package.

CREAS



**Support Services against
Violence, Abuse, Sex
exploitation of Children and
Adolescents;**

**Social Protection Services for
Adolescents under Social and
Educational Restraining
Orders;**

**Special Social Protection
Services to Individuals and
Families (Expected to be
extended to: elderly, women
victims of violence, etc)**

Active Search*;

Shelter;

Diagnostic of the situation;

Attending Plan;

Psychosocial Treatment;

Cross-sector exchange

** Sexual Exploitation, Child
Labour and others.*

Special Social Protection

Child Labour Eradication Programme – PETI

- Established by the Brazilian Government in 1996 as a Programme;
- Aims at eradicating child labour as of a government cross-sectoral activity;
- Aims at helping families with children and adolescents, age 16 and below, who are working – as defined on ETI National Plan - as any economic activity or sustenance activity, with or without profit, paid or unpaid, except for apprenticeship at the age of 14.

Special Social Protection

Child Labour Eradication Programme – PETI

Improvement Action for Control and Qualification of Social and Educational Activities of PETI

- Establishment of the System for Activity Control and Follow up of services provided by the Social and Educational Service of PETI – **SISPETI**;
- **Strengthening of Oversight Activities** of different child labour situations and the establishment of **partnership with the Ministry of Labour and Employment**;

Special Social Protection

Child Labour Eradication Programme – PETI

- Signature of a **Technical Cooperation Agreement** MDS and **Public Ministry of Labour** aiming at identification of children and adolescents in working conditions in the country and referring them to PETI;
- **Interministerial Exchange** through “**Programa Mais Educação**” (More Education Programme) (2007), composed by the following ministries: MDS, Sports, Education, Science and Technology, Culture, Environment and the National Secretariat for Youth. The Programme aims at contributing to integral education, by means of exchange of activities, and enhancing social and educational space and time;

Special Social Protection

Child Labour Eradication Programme – PETI

In the context of SUAS:

It is a group of actions based on three axis:

- Cash transfer to families of children and adolescents involved in any working situation;
- Provision of Social and education activities to children and adolescents;
- Monitoring of social situation of families;

Attends 875 thousand children/2008

Impacts of SUAS

- ❖ Greater **rationality** of expenditure on Social Assistance;
- ❖ **Transparency** of Social Assistance expenditures;
- ❖ Increased **effectiveness** of social assistance actions;
- ❖ Improved evaluation of the results of social assistance;
- ❖ Respect to the **federative alliance**;
- ❖ **Political Brand** – consolidation of the Social Assistance policy as a public policy;
- ❖ **Definition of the field of intervention of the social assistance policy**, with agreed upon fundamental concepts.

Ministry of Social Development and Fight
against Hunger



National Secretariat of Social Assistance