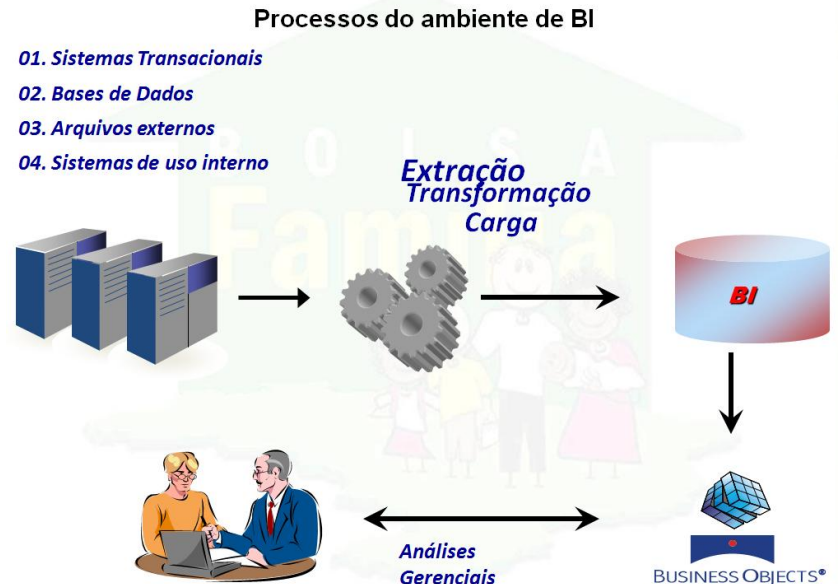
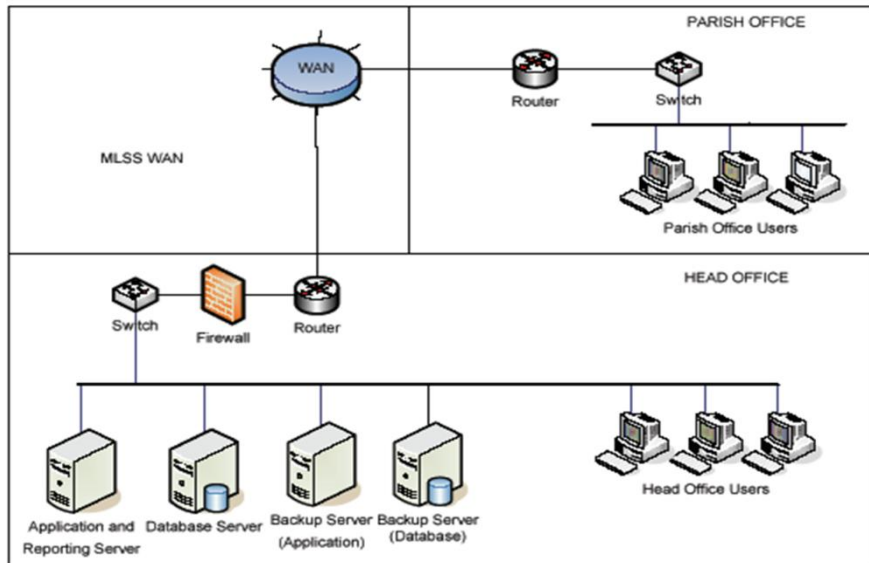
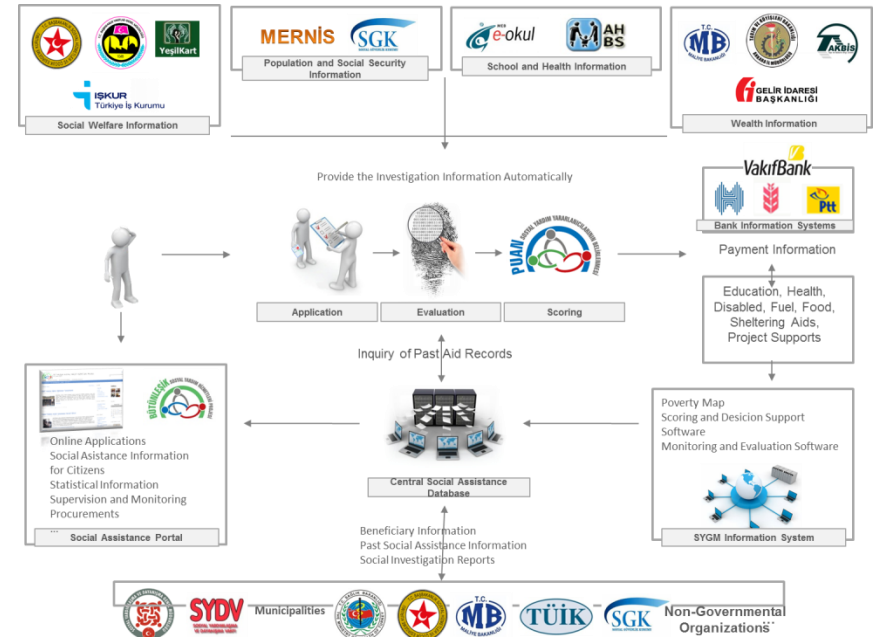
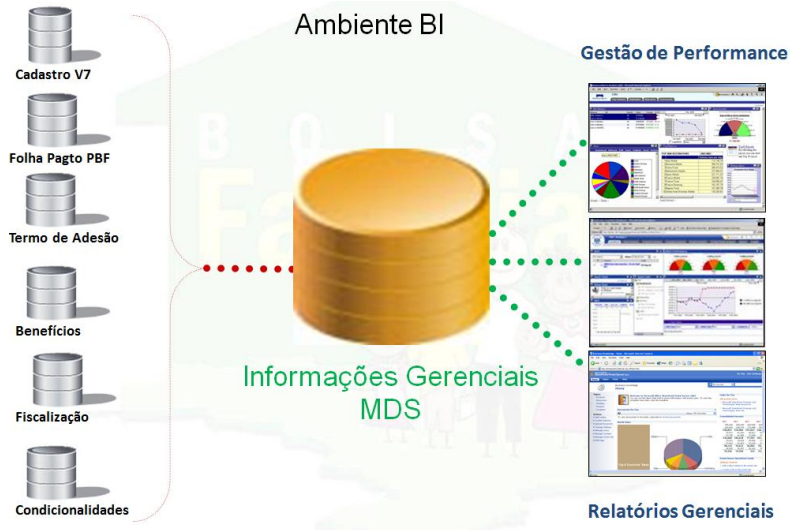


WHAT IS THE MIS?



Background and context:

MIS has become the backbone of social programs in the world. It is more than a software or hardware. It is a system that organizes all required information (data) for:

- (i) Decision making
- (ii) Management programs through operational monitoring of each of the processes
- (iii) Transparency and accountability.

Presenting the best practices.... And the questions for the discussion are:

- ✓ How does the MIS is used to help the government in their decision making process?
- ✓ How does the MIS help improving the programs overall?
- ✓ Is the MIS strengthening the overall social protection system?
- ✓ What are the main challenges of implementing an MIS?