



**Social Information Systems for Enhanced Integration,  
Inclusion and Impact:**

**Social Information Division  
Ministry of Social Development of Chile**



**Gobierno  
de Chile**

María José Rivera J.  
[mriveraj@desarrollosocial.cl](mailto:mriveraj@desarrollosocial.cl)

## **Ministry of Social Development of Chile and Social Information Division**

Operating Model

DataWarehouse Implementation

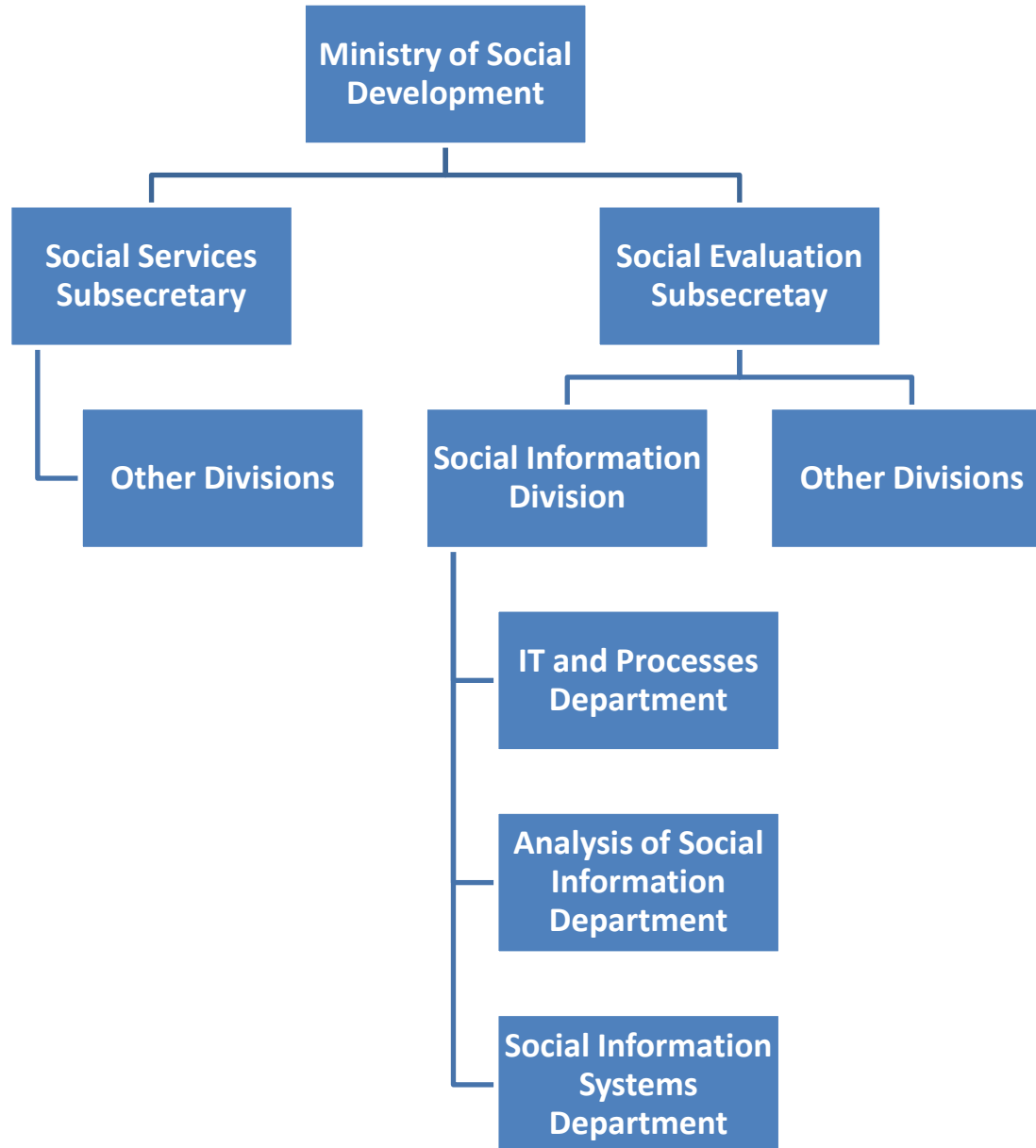
Present and Future



- In 2011 the Ministry of Planification was transformed to the Ministry of Social Development
  - Expanding its powers and positioning itself as the coordinating institution for all social policies, coordinating ministerial initiatives and monitoring their performance.
- **The mission of the Ministry of Social Development** is to contribute in the design and application of policies, plans and programmes related to social development, especially aimed to stop extreme poverty and to provide social protection to vulnerable families, promoting social integration, at national and regional level



# Social Information Division Structure





- The **Social Information Division**, among other functions, is in charge of the management of information collected from different institutions and internal areas, in order to contribute with the accomplishment of the benefits and programmes destined to the society.
- Social information is an important asset for public policies decision making, aimed to the most vulnerable zones in our country.



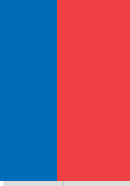


- Programs/Benefits (Source Systems):
  - Chile Growths With You (CHCC)
  - Social Protection Card (FPS)
  - Chile Solidary (CHISOL)
  - Administrative Information (RIS)



# Analysis of Social Information Department (DAIS)

---



- Develops and administrates the information systems of programmes and social benefits
- Management, integration and analysis of social information of citizens (ID level), to provide the necessary elements for monitoring:
  - Social programs
  - Interministry coordination
  - Proper targeting of state resources



- DAIS consists of two teams:

## 1) **Monitoring of Agreements (Sectorialists):**

- Business specialists
- Management and creation of agreements (information)
- Information exchange with external institutions
- Information exchange with internal clients
- Ensure the accomplishment of agreements of transference and connectivity
- Users' administration (website)

## 2) **Data Magement Team:**

- Data crossing of information and DataWarehouse analysis
- Business Intelligence (reporting)
- Data Mining



# Contents

---

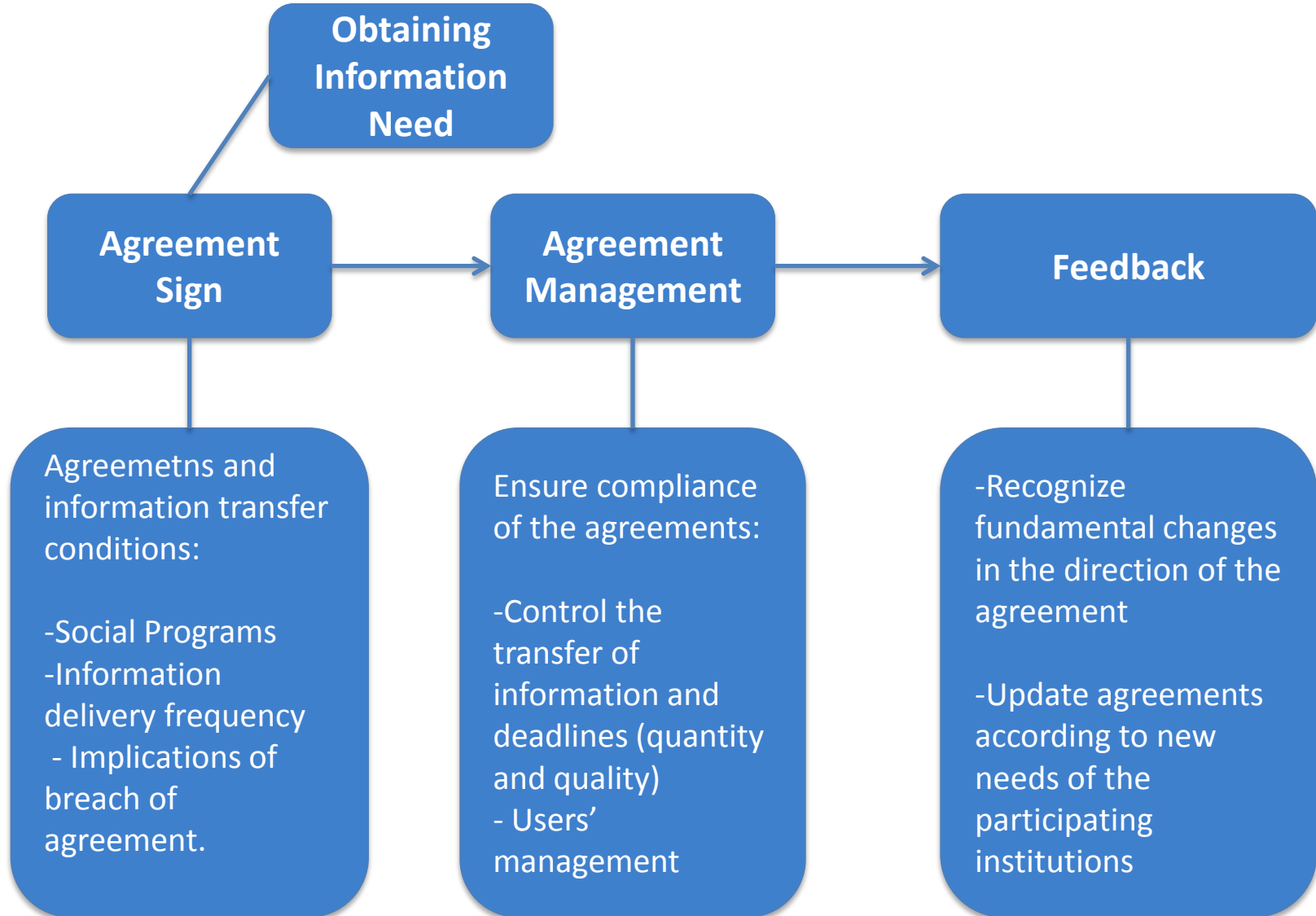
Ministry of Social Development of Chile

## **Operating Model**

DataWarehouse Implementation

Present and Future

# Operating Model: Agreements



# Crosses of Information: Internal Process

---



1. Receipt of the Sectoralists' request
2. Submit Sectoralists' request to Data Analysis team (Mantis)
3. Information crossing requested to Data Management team
4. Once the cross is solved, the file is reviewed by sectoralists
5. Delivery of information to the requester (client)





- Users' administration: RIS (Social Information Register) Websites
- Responsible of the websites:
  - Validates potential users of the website
  - Administrate user's profile
  - Receive observations of errors
  - Responsables of the information of the website
- Websites are supported by the IT and Processes Department



# Social Information Register (RIS)



Registro de  
**INFORMACIÓN SOCIAL**

[INICIO](#) [SOBRE EL RIS](#) [¿CÓMO FUNCIONA EL RIS?](#) [CONVENIOS RIS](#) [DATOS ALMACENADOS](#) [PREGUNTAS FRECUENTES](#) [CONTACTO](#)

Bienvenidos a la plataforma de **consulta en línea** acerca de la información de Prestaciones Sociales del Estado.

Consulte el Registro de Información Social Aquí

Ingresar 

## ÚLTIMOS CONVENIOS

Recientemente se han incorporado nuevos convenios de colaboración y conectividad. Visite la sección Convenios RIS para conocerlos.

## APRENDA A UTILIZAR EL RIS



### ¿Cómo funciona el RIS?

El usuario obtiene información a través de la consulta a un RUN, es decir, digitando el RUN de la persona de quien se desea obtener información.

## PREGUNTAS FRECUENTES



Encuentre aquí las preguntas y respuestas más habituales sobre la plataforma RIS

Si tiene alguna consulta que no se encuentre en esta sección, envíenos su pregunta aquí

Hacia el

INGRESO ÉTICO  
**FAMILIAR**



Obtenga **Certificado**  
Ficha de Protección  
Social **Aquí**

Observatorio  
de la  
Realidad

INFORME DE POLÍTICA SOCIAL  
2011

# Contents

---

Ministry of Social Development of Chile

Operating Model

**DataWarehouse Implementation**

Present and Future

# DataWarehouse Implementation Objective

---

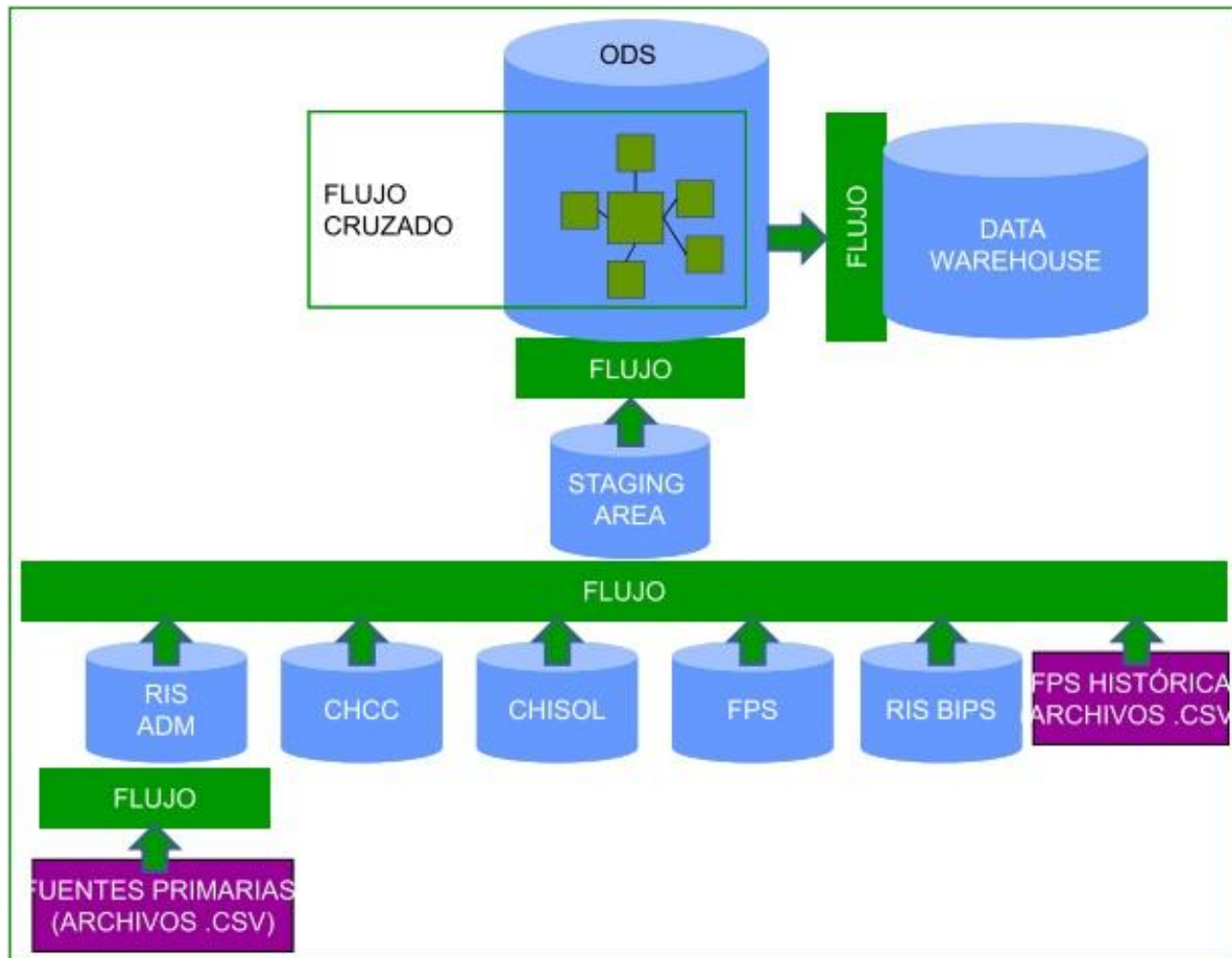


- Unique Data Repository with high quality data
- Collect, integrate and manage unified social information, improving data exploitation
- Standardize concepts and terms of business
- High safety standards



# DataWarehouse Implementation Objective

- The DWH consolidates and unifies information of different source systems:





# Benefits of the DWH

---

- Integration of agreements' information from different institutions.
- Solution for requestes of information for: Presidency, parliamentarians, institutions and other ministries.
- For example, during 2011 there were 50 requests of information; and during 2012 there has been responded more than 150 requests.
- Consultation of historic information (more than 60 months), including reports (Cognos), which wasn't possible before.
- Integration of the Ministry and all the Departments of the Division: operations, reporting, information



# Contents

---

Ministry of Social Development of Chile

Operating Model

DataWarehouse Implementation

**Present and Future**

# What are we doing today?

---

- **Monitoring of Agreements (Sectorialists):**
  - New agreements
  - Update of current agreements
  - Update the load of all social programs
- **Data Management (DataWarehouse):**
  - Models update of Datawarehouse
  - Data Reporting
  - Quality Assurance Project (Information Analysis) to:
    - Diagnosis and status of the data quality of the source systems
    - Application of business rules which allows the improvement of data quality according to the business needs
    - Improve data quality inside the Datawarehouse

# Future Challenges

---

- New agreements
- Update of current agreements, if needed
- Analysis of possible changes to the website
- Constant analysis to data quality
  - Ensure good quality of the data to contribute with decision making and benefits accomplishment
  - Interaction between sectoralists and data management team
- Automatization of loading information of agreements to the DWH
- Improve and consolidate data reporting (business intelligence)

**Thank you**



**Gobierno  
de Chile**

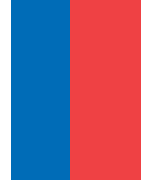
[www.gob.cl](http://www.gob.cl)

# Integrated System of Social Information (SIIS)



Sistema Integrado de  
**INFORMACIÓN SOCIAL**

Sistema Integrado de INFORMACIÓN SOCIAL	Ficha de Protección Social	ChileSolidario	Registro de INFORMACIÓN SOCIAL	Chile CRECE contigo
Programa de Centros de Atención para hijos e hijas de Mujeres Temporeras (CAHMT)	Ficha Protección Social	Formulario Único de Derivación CHS	Portal RIS	Sistema de Monitoreo y Seguimiento Chile Crece Contigo
	Estadístico FPS	Registro y Monitoreo Programa Puentes	Intercambio de Base de Datos en Convenio RIS	
		Buscador de Familias y Personas CHS		Sistema de Registro Programa de Apoyo al Recién Nacido
		Mantenedor de Programa Red Social CHS		
		Formulario Solicitud de Cédulas Identificación (FEI)		
		Registro y Monitoreo Programa Vínculo		
		Registro y Monitoreo Programa Calle Chile Solidario		



IBM Cognos Connection cognos\_02 Cerrar sesión

Carpetas públicas | Mis carpetas | PORTAL RIS | FPS

## Ficha de Protección Social

Vision | Analisis | Resultados

Reportes FPS  
Entradas: 1 - 10

- 01. N° de Vagos y No Vagos
- 02. N° de Familias (folos) con jefe de hogar con RUT vigente y no vigente
- 03. N° de RUT respectados Vagos
- 04. N° de Familias (folos) por zona
- 05. N° de familias (folos) 5% más vulnerable
- 06. N° de familias (folos) 40% más vulnerable
- 07. N° de Familias Indigentes Pobres y no Pobres
- 08. N° de fichas aplicadas y actualizadas en el último mes
- 09. N° de Fichas en estado terminadas, anuladas, en revisión y en digitación
- 10. Distribución de la Población por Edad y Sexo

REPORTES ADICIONALES

- Informe FPS (RS Promot) v4
- Report Tablero FPS (BI)
- Report Tablero FPS (BI) version 2
- Report View of Reporte FPS (Active Report) v5
- Reporte Inicio (AR)

Ministerio Desarrollo Social  
Ficha Protección Social

### FICHAS TABLERO DE CONTROL

Tendencia	Estado Ficha	Trend	Status	% of Plan
	Terminada		Terminada	Terminada
	Revision		Revision	Revision

### TENDENCIAS

#### FICHAS POR REGION

#### INTEGRANTES POR REGION

